



10 MM MINIATURE VALVE ACCESSORIES

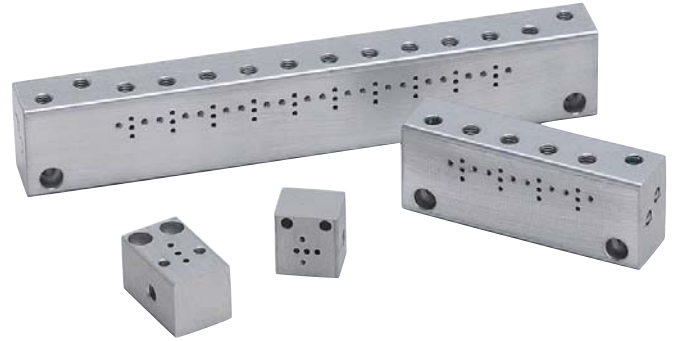
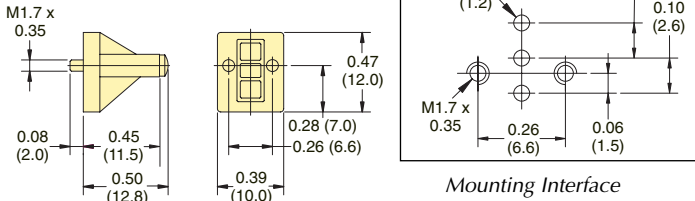


Cover Plate

Manifold Cover Plate includes plate, gasket and two screws.

Order No.
E10M-CP

10 mm Cover Plate



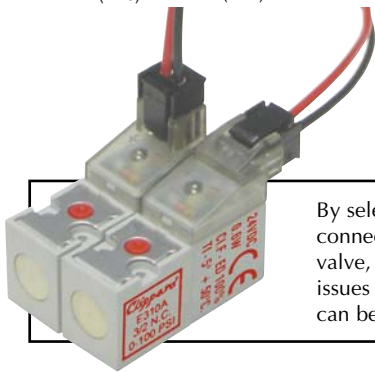
Manifolds

Manifolds are available for one to 12 valves, and are supplied with mounting screws and gaskets. Spare hardware and closing plates also available. Add -M5 for Metric ports.

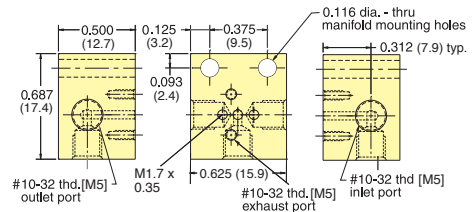
Order No.

E10M-01

Single Station Manifold



By selecting the appropriate connector type for your 10 mm valve, tight spaces, orientation issues and electrical requirements can be accommodated easily.



Connectors

Wire Connector must be ordered separately.

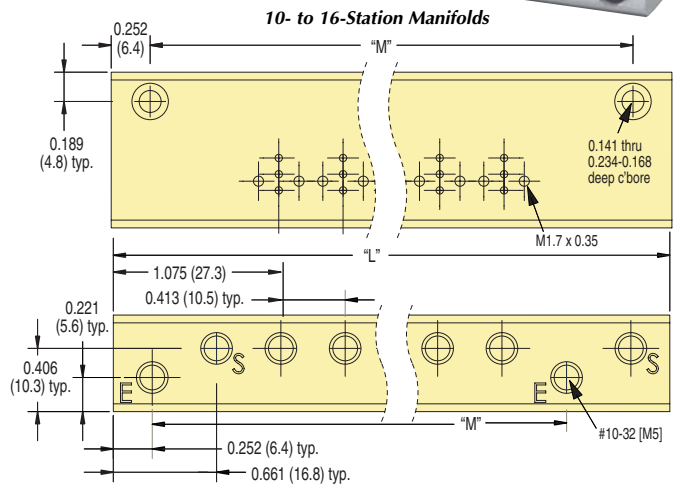
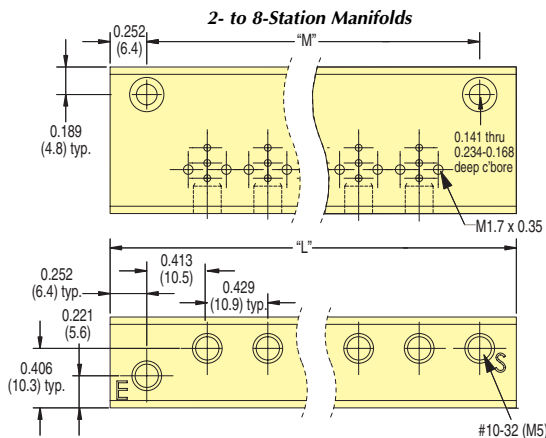


Order No.

- C2A-RB300** Connector with Cable, 11.8" (300 mm)
- C2A-RB500** Connector with Cable, 19.69" (500 mm)
- C2A-RB1000** Connector with Cable, 39.37" (1,000 mm)

Molex connector #050013-80000.

Multi-Station Manifolds



Part No.	Stations	"L"	"M"	Part No.	Stations	"L"	"M"	Part No.	Stations	"L"	"M"
E10M-01	1			E10M-06	6	3.39 (86.1)	2.90 (73.7)	E10M-12	12	6.70 (170.2)	6.20 (157.5)
E10M-02	2	1.74 (44.2)	1.24 (31.5)	E10M-08	8	4.22 (107.2)	3.72 (94.5)	E10M-14	14	7.52 (191.0)	7.02 (178.3)
E10M-04	4	2.57 (65.3)	2.07 (52.6)	E10M-10	10	5.87 (149.1)	5.37 (136.4)	E10M-16	16	8.35 (212.1)	7.85 (199.4)

Add "-M5" for metric threads. Consult factory for custom manifolds.